

# Fitment Guide

## Brakelight Upgrade for RVF400 / VFR400

[www.ecliptech.com.au](http://www.ecliptech.com.au)

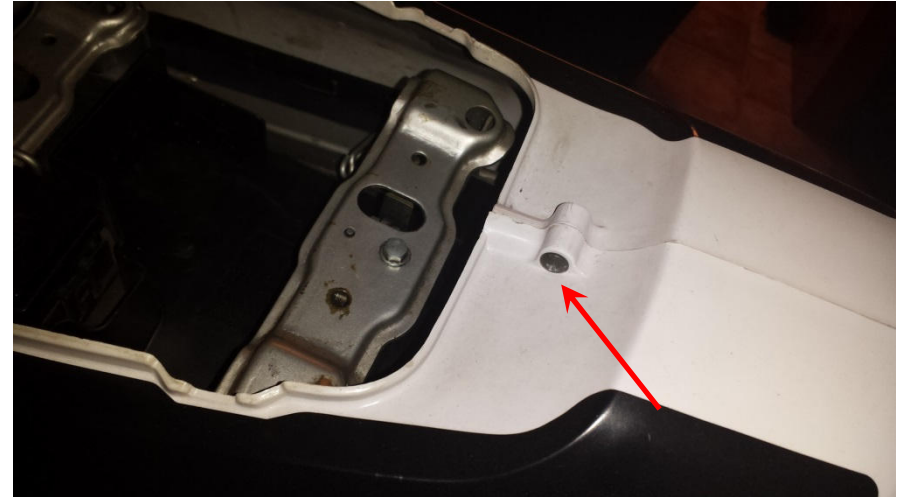
### Brakelight Removal

Check your brakelight just one more time, before fitting the upgrade. Ensure your brake works. Remember what it looks like before the upgrade.

Remove riders seat. There are two screws, under the corners of the padding.

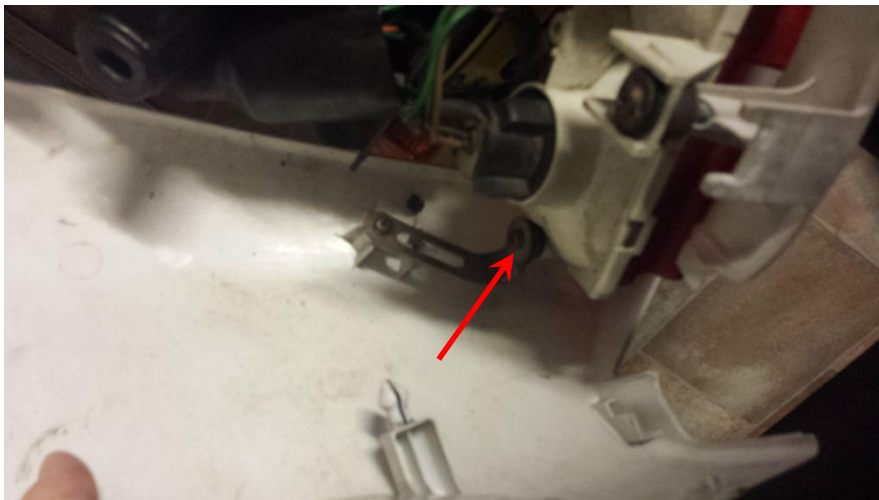


Remove the rear fairing.





With the fairing removed, you will be able to unscrew the brakelight.



The red lens is glued in place. The glue softens when hot, and the best method is to soak it in hot water from the tap, mixed with some from a boiled kettle. Soak for a good 5 minutes so the heat gets in (gets a good clean too).

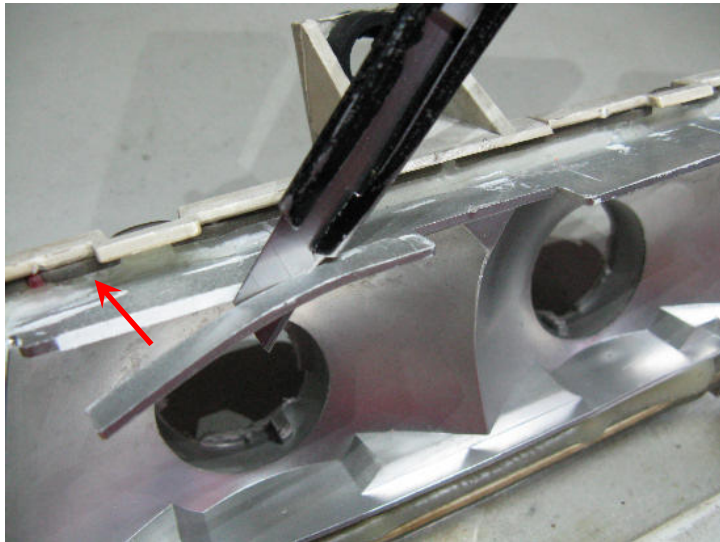
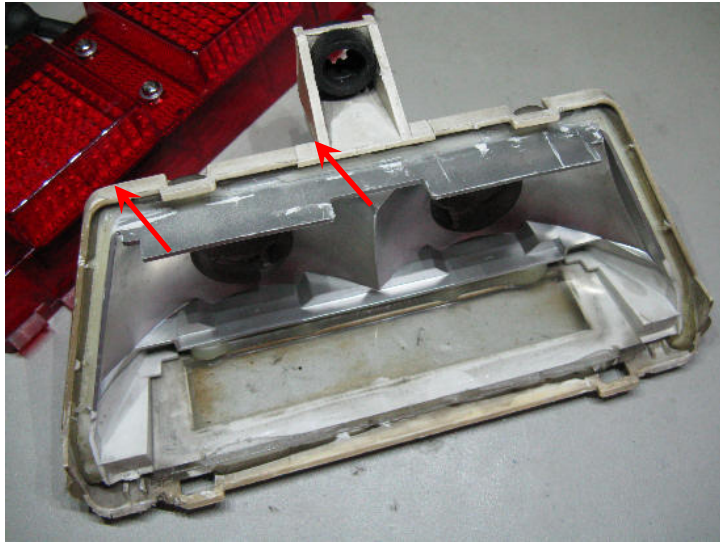
Watch the metal bolts at the back, as they will be the hottest to handle.

Keep in the water so the glue stays soft. Pry the bottom edge with a flat screwdriver. **Just go slowly and give the glue time to separate.** It will be like chewing gum.

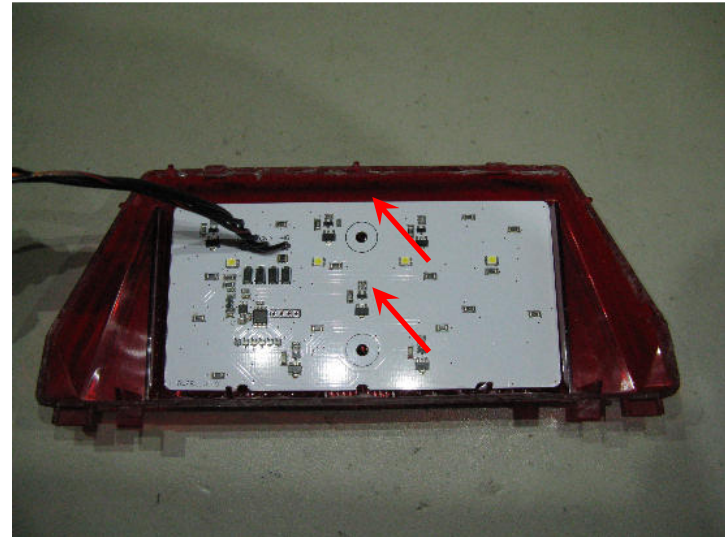
The white part has two tabs on the bottom edge, which you need to lever out first.



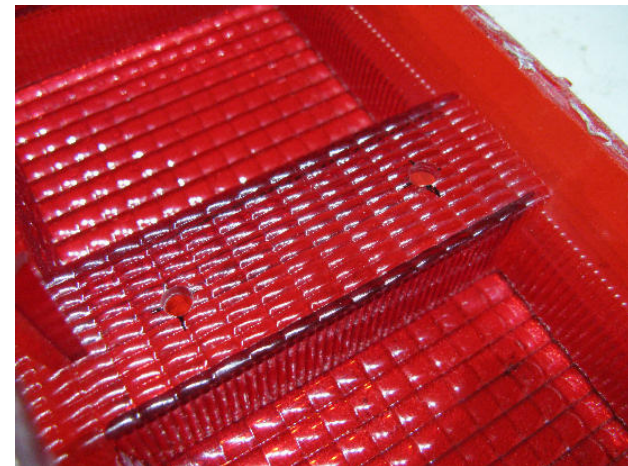
Trim the two overhanging plastic pieces off. It is soft plastic and easily cut.



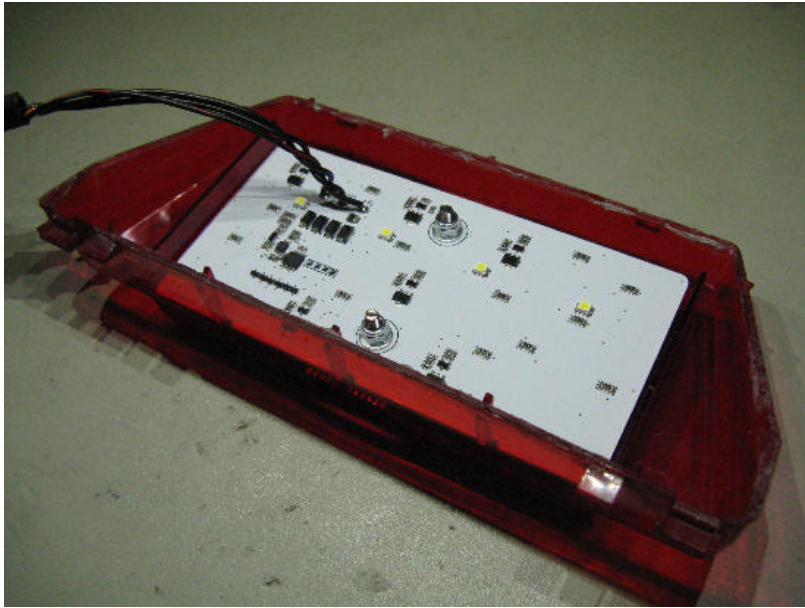
Sit the module in the lens and mark the two hole locations on the lens.



Drill both holes with a 4mm drill. Drill very slowly. Brittle plastics will chip and crack around the edge if you drill through too quickly. Go slow for the win.



Fit the supplied bolts and locknuts.



Heat the back reflector back up so the glue softens, and then push the lens back into place.

Plug your new brakelight in and give it a test before re-assembly.



Fit the fairing back on and then re-test your brakelight before riding.



## Configuration

### Reset to Factory Defaults

Turn ignition on and immediately flash the brake light using the brake lever **5 times**. Then wait several seconds for the brakelight to return to normal operation.

### Brakelight Mode

Turn ignition on and immediately flash the brake light using the brake lever **6 times**. The brakelight go to demo mode after a few seconds, cycling between the display with brake on and brake off. Inspect the display, then press the brake lever once to advance to the next mode. When you have selected the mode you want, turn ignition off.

### Brakelight Brightness

Turn ignition on and immediately flash the brake light using the brake lever **7 times**. The brakelight go to demo mode after a few seconds. Press the brake lever once to advance to the next brightness setting. Low, Medium, High.

### Numberplate Brightness

Turn ignition on and immediately flash the brake light using the brake lever **8 times**. Wait a few seconds. Press the brake lever once to advance to the next brightness setting. Low, Medium, High.