



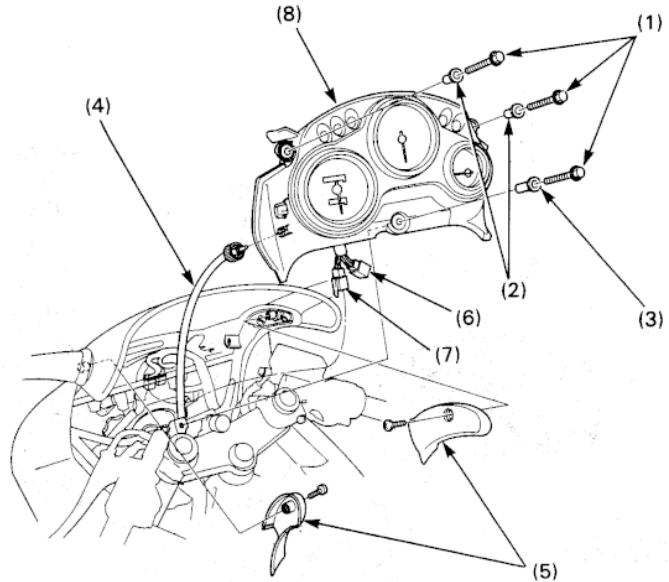
Fitment Guide

Honda CBR600F

The 3 wires for the Shift-I are attached at the rear of the instrument.

Ask Ecliptech to pre-fit O-ring terminals to the wires, so you can easily bolt them with the existing screws.

This is the same fitment approach when do with other similar bikes, like the CBR250's, CBR400's, VFR400's, RVF400's etc...



	Shift-I		CBR600F
Tacho	Black/Blue	→	Yellow/Green (Y/G)
Ground	Black	→	Green (G)
Ignition	Black/Red	→	Black/Brown (Bl/Br)

