

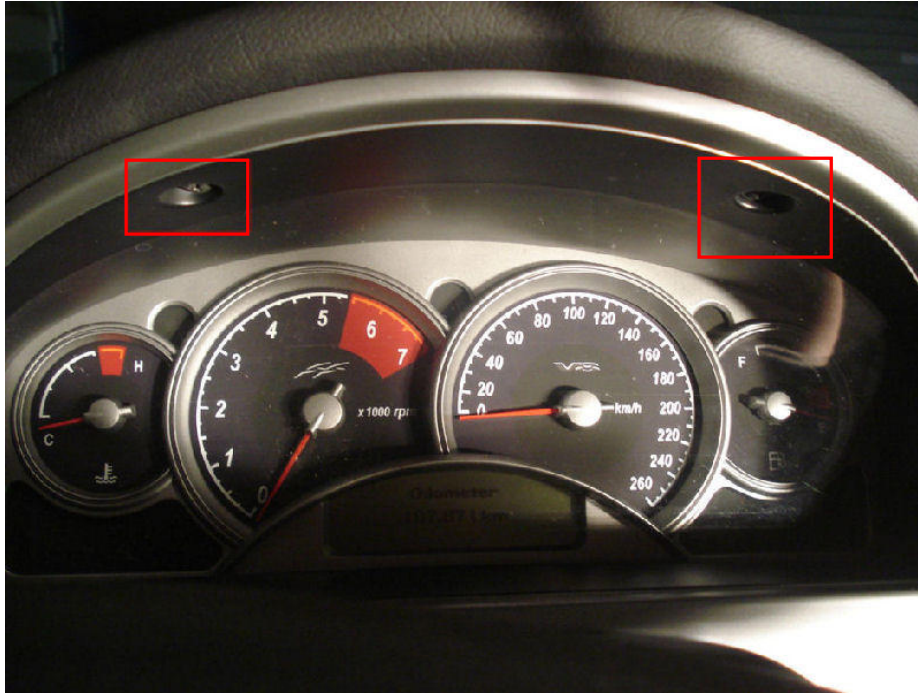
# Installing Shift-I into Holden VY II SS Commodore

Submitted by customer

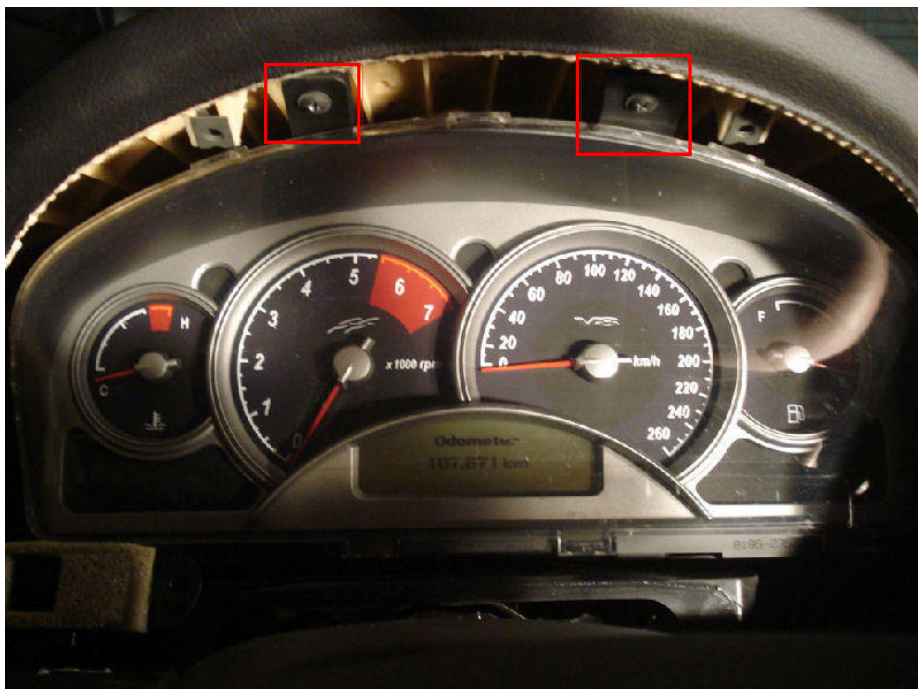
Wiring similar to other Commodores, VX, VZ, VT.

Before starting disconnect your battery.

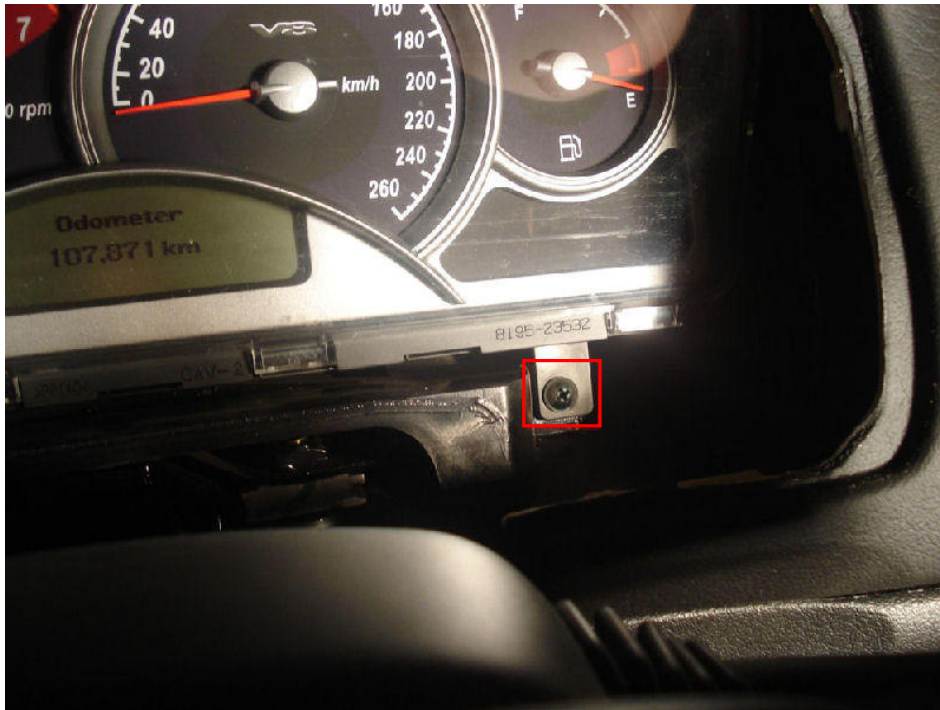
1. Remove two screws from top of Instrument cluster surround. Pull the top down toward the steering column. There are only two clips holding this in place one on each side.



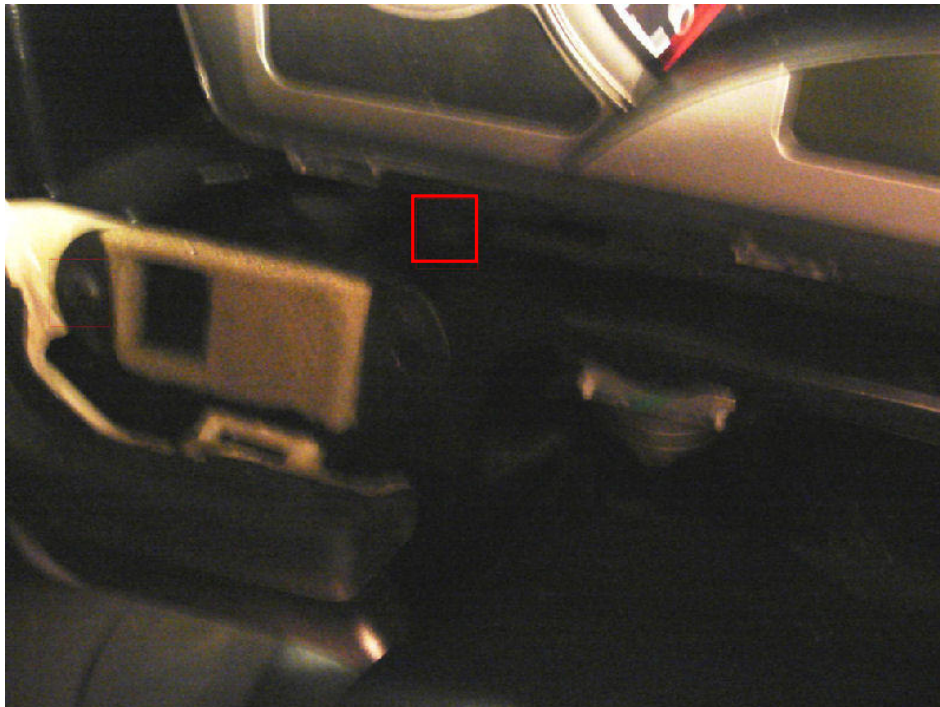
2. Remove the mounting screws at the top of the instrument cluster



3. Remove the mounting screw at the lower right side of the instrument cluster.

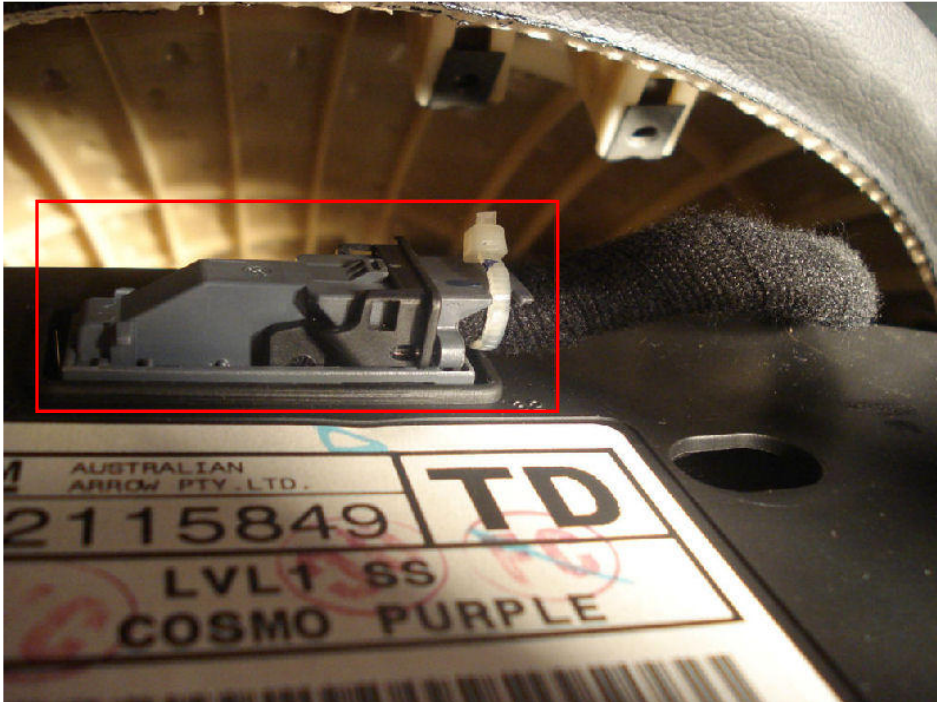


4. Remove mounting screw at the bottom right. To access this a little easier I removed the sensor in front of the screw



5. Now you should be able to pull the instrument cluster forward. I pulled the top down and rested it on the steering wheel so that I could access the loom connector at the rear.

6. Press down and lift black clip up, this will eject the connector. The Instrument cluster should now be free and you can remove it.

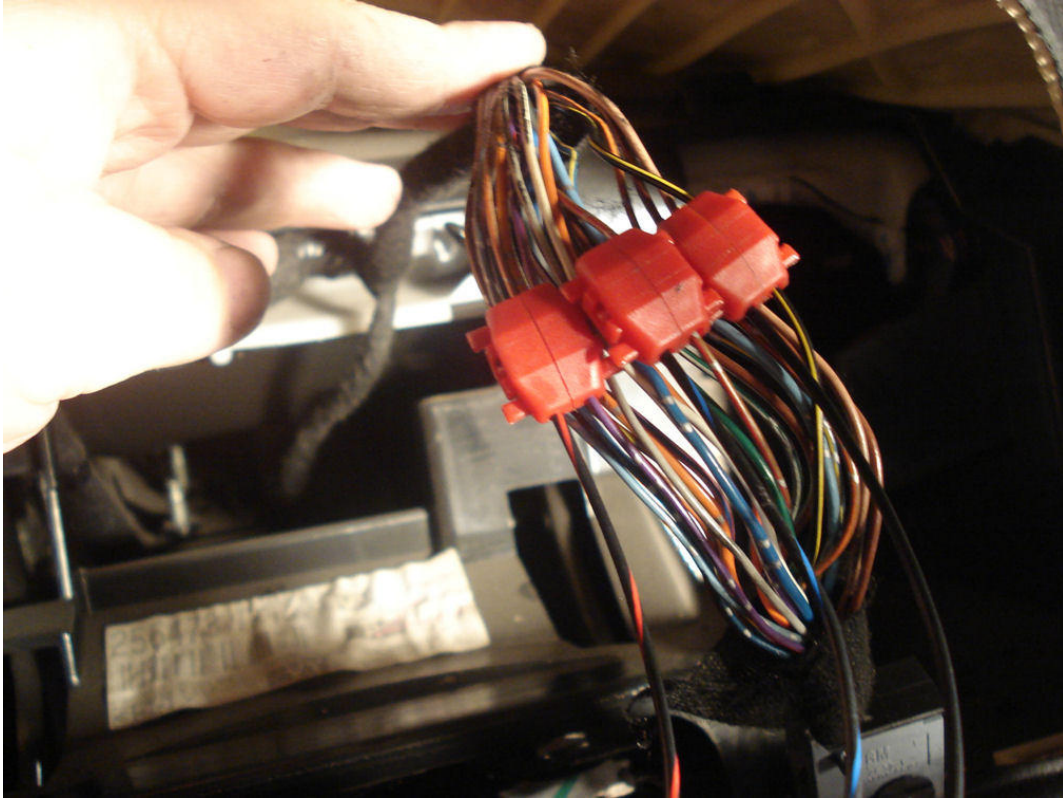


7. You need to remove the black tape that is covering the wires, I carefully removed about 4 inches to allow access to the cables contained within.
8. Connect the wires using the supplied clips (included with Shift-I).

Shift-I	Instrument Wiring	Purpose
Black/Red	Pink/Blue	Ignition
Black/Blue	Brown/Red	Tacho
Black	Black/Yellow	Ground

Wiring colours are the same for VX, VY, VZ & VT.

(see picture next page)



9. Isolate wires with insulation tape, and re-bundle
10. Reconnect to instrument cluster and at this stage I reconnected the battery and check operation
11. If testing is fine re-mount instrument cluster and surround, locating wiring roughly where you want to mount the unit. I mounted my I Shift to the right of the cluster so as not to restrict view of the LCD screen in the middle.
12. Once in place with the mount strips I simply tucked the excess wire behind the surround.



Enjoy.